
VISIT **FLORIDA**[®]

Kid's Corners Specs

Kid's Corner



Bleed: 24.5" w x 100.5" h
 Trim: 24" w x 100" h
 Live: 23" w x 99" h

Wall Vinyl
 Adhesive backed vinyl
 w/ luster overlam
 Installation required

Bleed: 88" w x 21" h
 Trim: 87.5" w x 20" h
 Live: 86.5" w x 19" h
 Wall Vinyl
 Adhesive backed vinyl w/ luster overlam
 Installation required

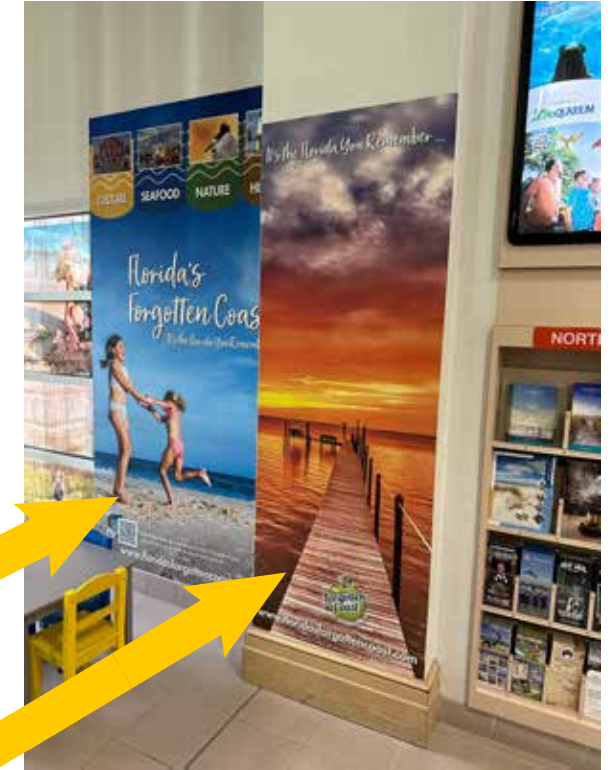
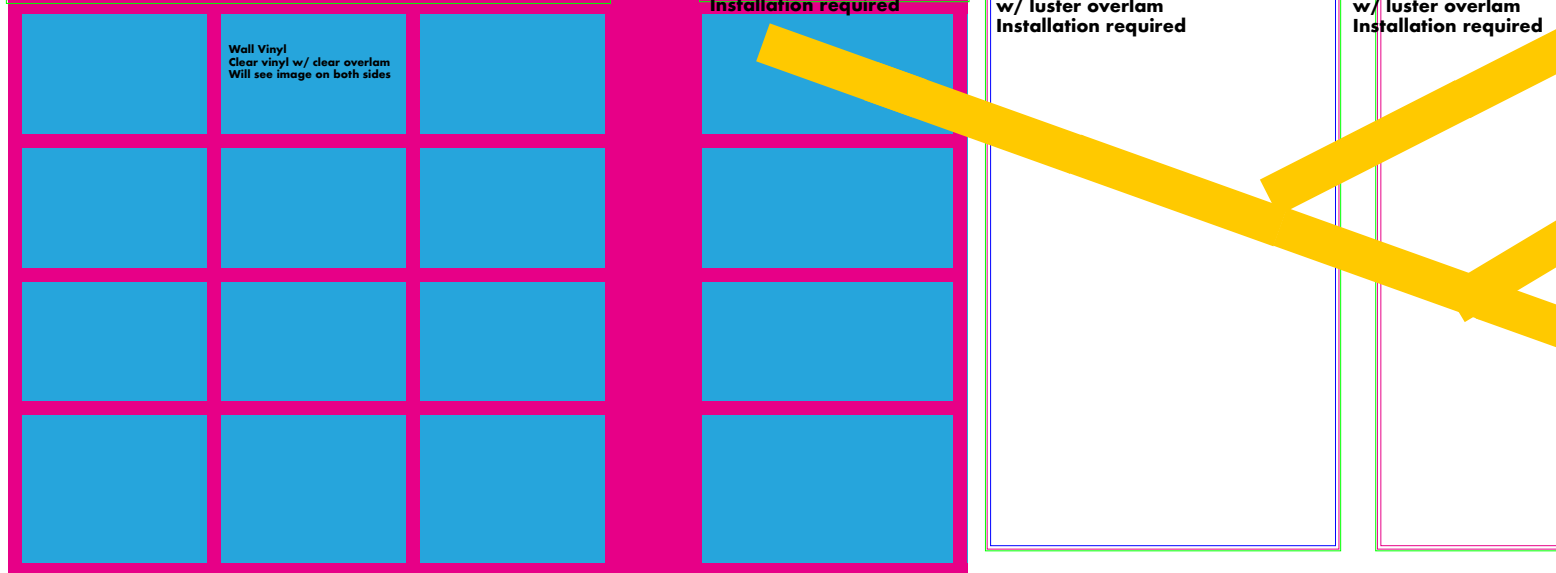
Wall Vinyl
 Clear vinyl w/ clear overlam
 Will see image on both sides

Bleed: 39.25" w x 20.5" h
 Trim: 38.75" w x 20" h
 Live: 37.75" w x 19" h
 Wall Vinyl
 Adhesive backed vinyl
 w/ luster overlam
 Installation required

Bleed: 51.75" w x 100.5" h
 Trim: 51.25" w x 100" h
 Live: 50.25" w x 99" h
 Wall Vinyl
 Adhesive backed vinyl
 w/ luster overlam
 Installation required

Bleed: 29.75" w x 100.5" h
 Trim: 29.25" w x 100" h
 Live: 28.25" w x 99" h
 Wall Vinyl
 Adhesive backed vinyl
 w/ luster overlam
 Installation required

Kid's Corner



Kid's Corner



Kid's Corner

Bleed: 82" w x 123.5" h
Trim: 81" w x 122.5" h
Live: 77" w x 118.5" h

Concrete Wall Vinyl
Adhesive backed vinyl w/ luster overlam
Installation required

Bleed: 258.5" w x 123.5" h
Trim: 257.5" w x 122.5" h
Live: 253" w x 118.5" h

Removable Wall Vinyl
Adhesive backed vinyl w/ luster overlam
Installation required

Kid's Corner



Kid's Corner

Bleed: 132.75" w x 114.5" h
Trim: 132.25" w x 114" h
Live: 131.25" w x 113" h

Wall Panels - Left Side
 Adhesive backed vinyl w/ luster overlam
 Mounted to 3/16" Ultraboard
 Installation required

Bleed: 107" w x 114.5" h
Trim: 106.5" w x 114" h
Live: 105.5" w x 113" h

Wall Panels - Center
 Adhesive backed vinyl w/ luster overlam
 Mounted to 3/16" Ultraboard
 Installation required

Bleed: 132.75" w x 114.5" h
Trim: 132.25" w x 114" h
Live: 131.25" w x 113" h

Wall Panels - Right Side
 Adhesive backed vinyl w/ luster overlam
 Mounted to 3/16" Ultraboard
 Installation required